

Welcome

**Gas Data Portal
Community webinar**

The purpose of today

- Why we set up the Gas Data Portal Community
- What it means to share early previews

The format of today

- Ask questions
- Opportunities for more general feedback
- Opportunities to get involved



Agenda

- Meet the team
- **Demonstration of Customisation**
- **Your feedback on Search Everywhere**
- **Under review: our support function**
- What would you like to hear about next?

Meet the team

Manesh Bulsara, Product Owner

Zahir Ahmed, Programme Manager

Rachel Hinsley, Business Sponsor

Neil Rogers, Product Analyst

Esther Kalusi, Business Analyst

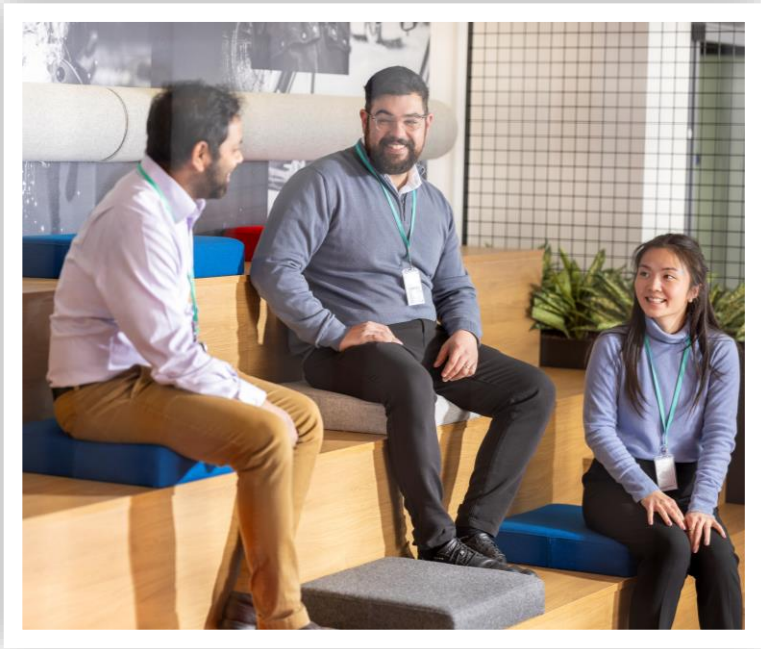
Thomas Castley, Product Analyst

Jake Readman, Technical Lead

Emma Wood, Communications

Rachel Barnes, Business Change Manager

Jamie McSweeney, Senior Business Change Officer



Demonstration: Customisation

Create and save your favourite data searches and reports

...save your favourite reports

bookmark your data items...

and save your data queries.

Frame 7

Frame 8

Frame 9

What's better... you don't need to register!

You can expect the same **open-source** data...

...without sharing your personal information.

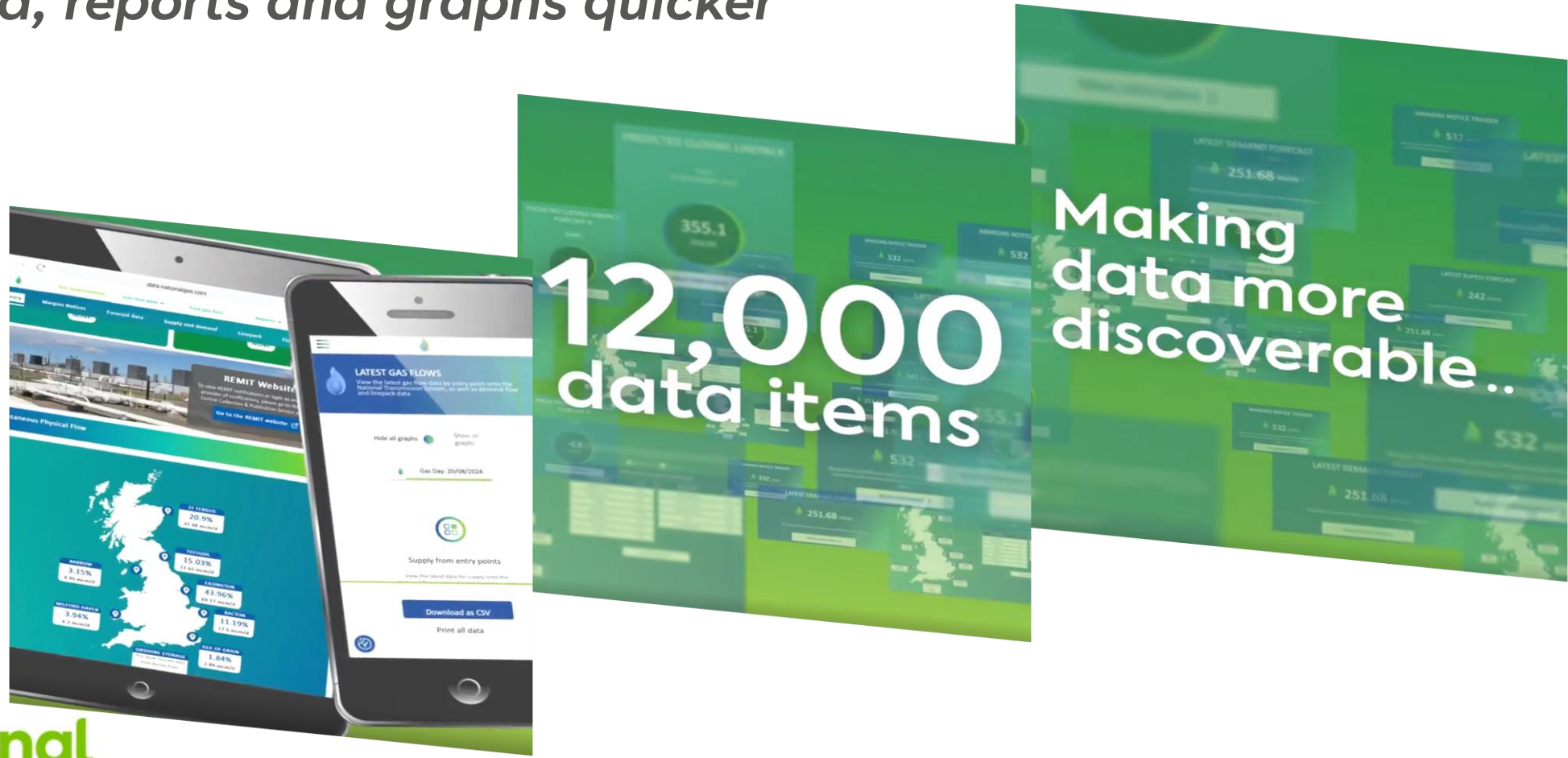
Frame 10

Frame 11

Frame 12

New release: Search Everywhere

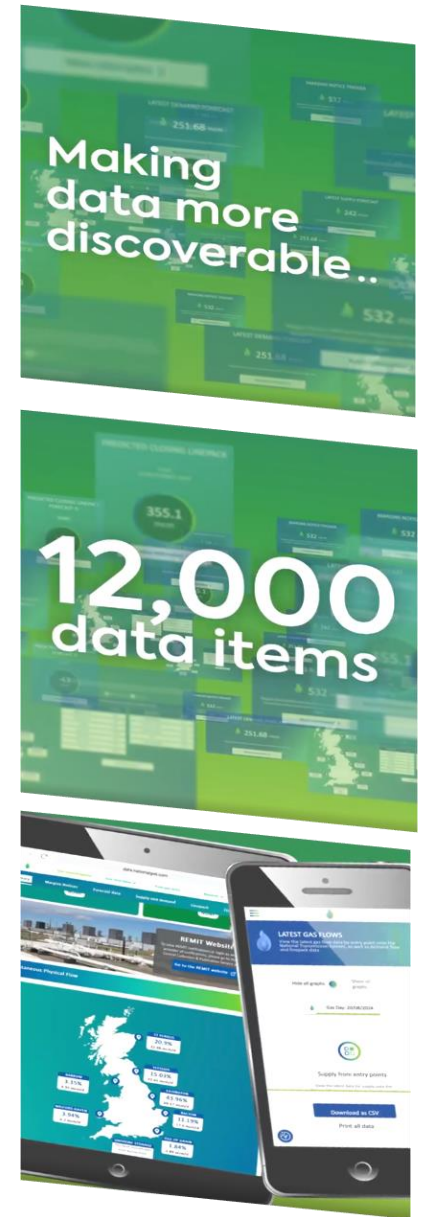
Find data, reports and graphs quicker



Search Everywhere

What's been your experience?

- Any **technical challenges** - such as bugs or glitches?
- Or searches returning **no results**?
- **Does it do what you expected?**
- How would you rate the ease of use?



In development: help and support features

- How do you find help and support currently?
- What would be useful for the future?

The screenshot displays the National Gas Data Portal website. The top navigation bar includes a search box with the placeholder text "Type keyword to search" and a magnifying glass icon. Below the search bar, the main navigation menu contains links for "Gas system status", "Gas flow data" (with a dropdown arrow), "Find gas data", "Reports" (with a dropdown arrow), and "API" (with a dropdown arrow). A blue banner below the navigation menu reads "Technical Guidance" followed by the text "Information about conversion factors and how to use PowerQuery with Excel." The main content area features the National Gas Transmission logo and the heading "Conversion factors". Below this, a paragraph states: "National Gas Transmission publishes data in UK standard units. Use these conversion factors as a guide to convert them to other units:". Three bullet points list conversion factors:

- kWh (25°C, 0°C, 1.01325 bar) = kWh (15°C, 15°C, 1.01325 bar) x 0.9990
- Normal mcm volume = Standard mscm (UK) x 0.9479
- mscm to kWh (15°C, 15°C, 1.01325 bar) = mscm * 1000000*CV (39.6)/3.6

The footer of the page is divided into three columns. The left column contains the National Gas Transmission logo, social media icons for Twitter and LinkedIn, and a small circular icon. The middle column is titled "CONTACT US" and includes the text "Give website feedback or ask us a question:", the email address "box.operationalliaison@nationalgas.com", and the phone number "01926 656 474". Below this is a link icon and the text "Send a request for gas transmission data". The right column is titled "POLICIES" and lists "Accessibility statement", "Data disclaimer", "How we use cookies", "Modern slavery statement", "Privacy policy", and "Terms and conditions". A second "ABOUT" section lists "About the data portal", "Glossary", "Sitemap", and "Technical guidance".

Over to you...

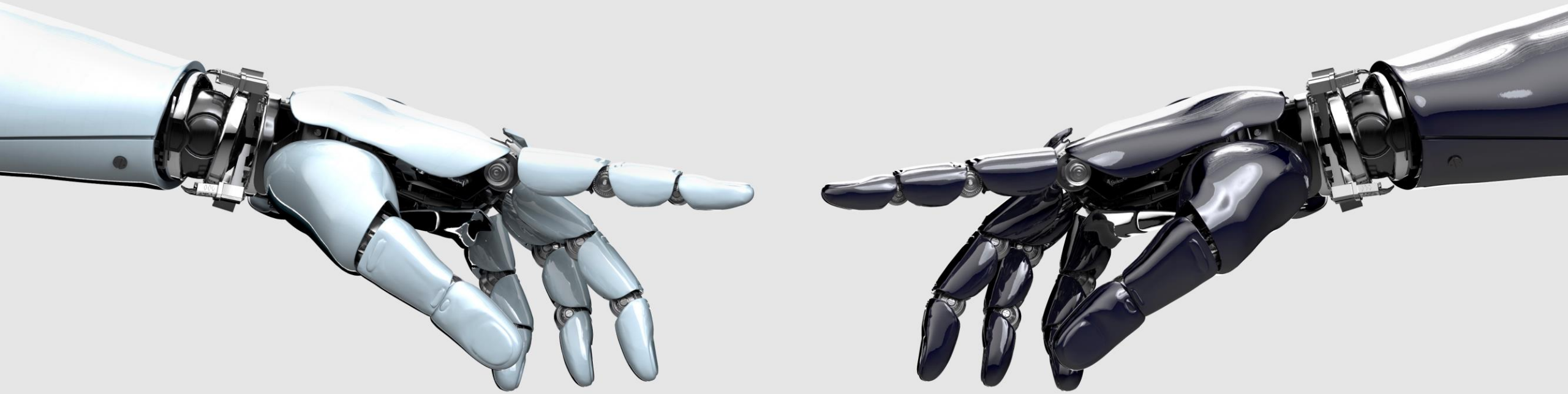
What do you want to hear more about?

- In our focus groups
- In our newsletter

Please complete our feedback form.



Opportunities.



[Email box.operationalliaison@nationalgas.com](mailto:box.operationalliaison@nationalgas.com)

And finally..

You can find all our communications on the National Gas website.

Including a community sign-up link

Gas Data Portal community newsletter

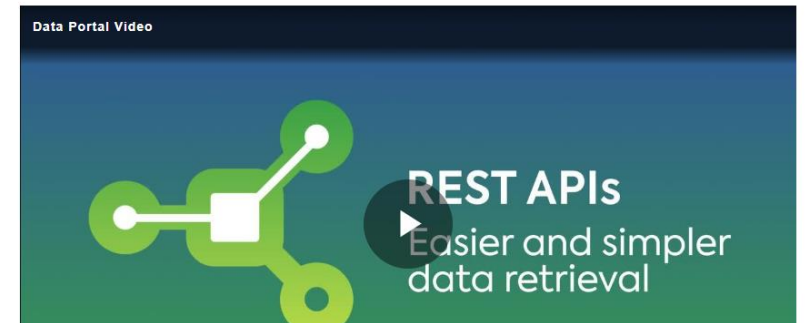
Read our latest Gas Data Portal community newsletter to find out more about the latest features, updates and enhancements.

[Community update](#)

Gas Data Portal guides and features

Take a look at our Gas Data Portal videos, including 'how-to' guides and introductions to new features and functions

New features



Join our Gas Data Portal user community

We are building a community of people who regularly use the Gas Data Portal and its services. If you want to learn more about operational gas data and contribute to its development, our user community is for you.

We are keen to engage with Gas Data Portal users to share upcoming features, gather feedback and keep you updated on any forthcoming changes or maintenance. As we evolve our Gas Data Portal and the operational data it provides, we want to share the journey with like-minded people who can help us continuously improve the portal for everyone

Terminals, supply flow rates and percentages

14:10

ST FERGUS	55.82 mcm/d	18.28 %
EASINGTON	79.54 mcm/d	26.05 %
ISLE OF GRAIN	37.11 mcm/d	12.15 %

Thank you for joining
Gas Data Portal
Community webinar